

# IMAGE 1

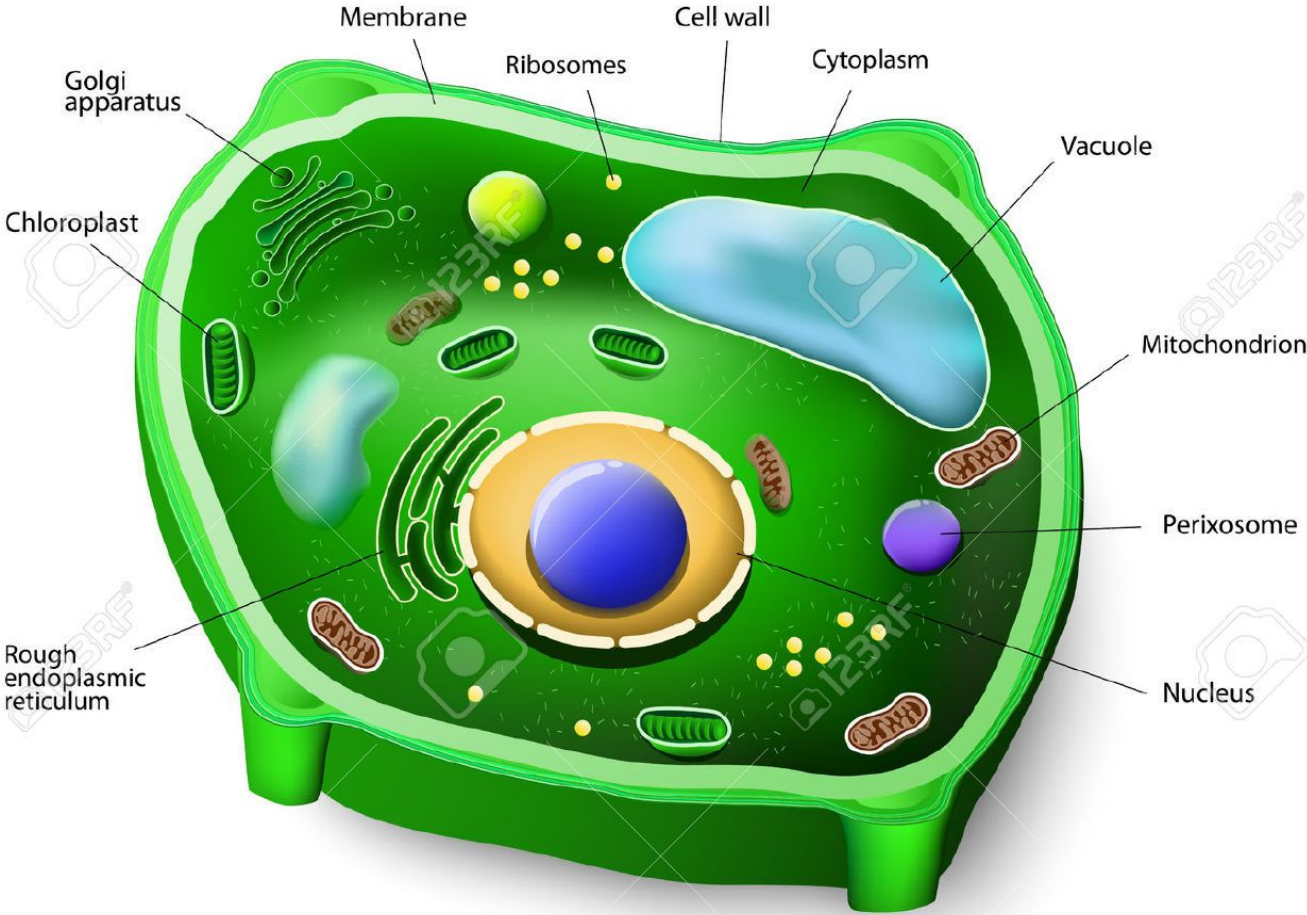


# IMAGE 2

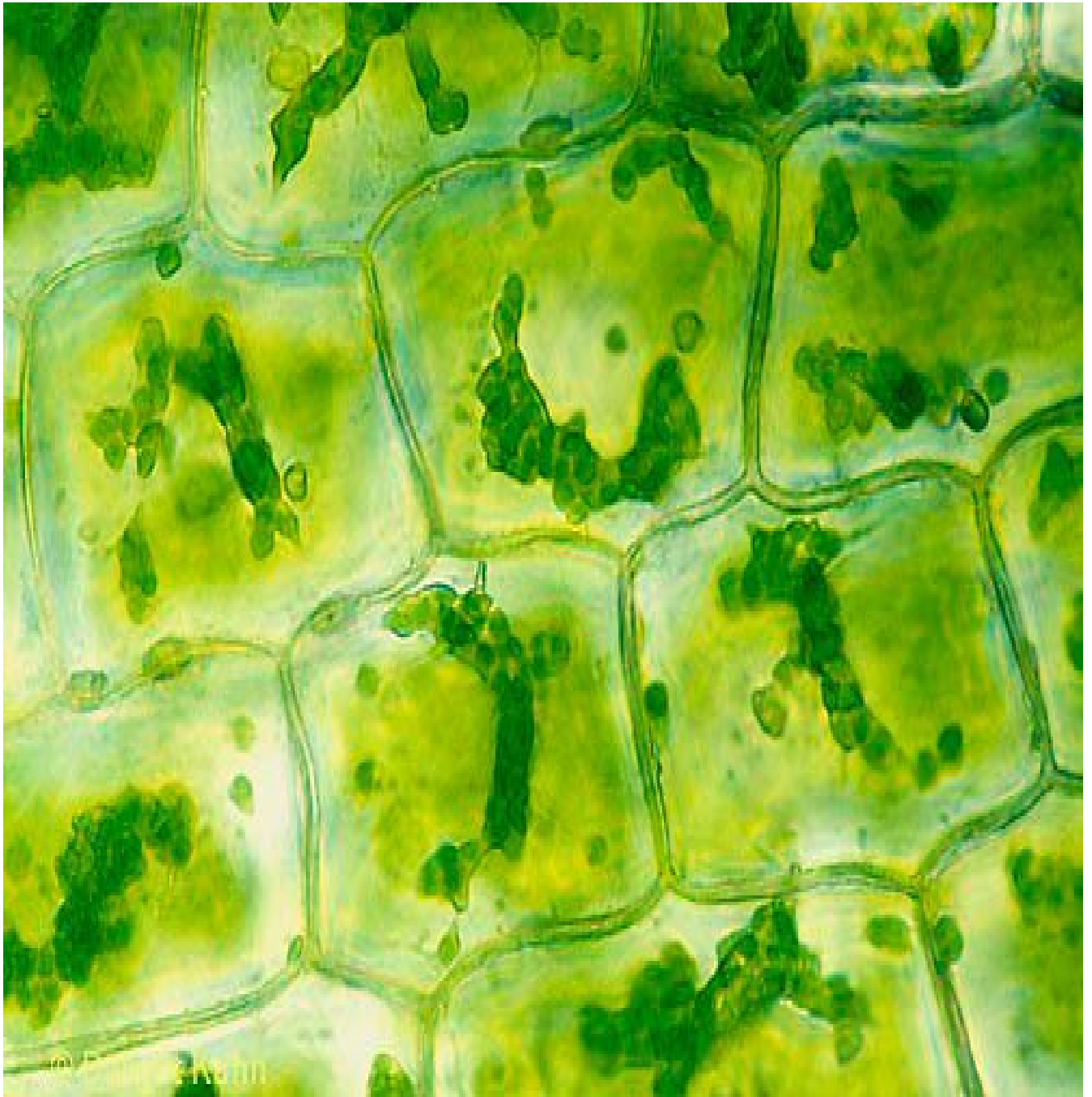


© K1

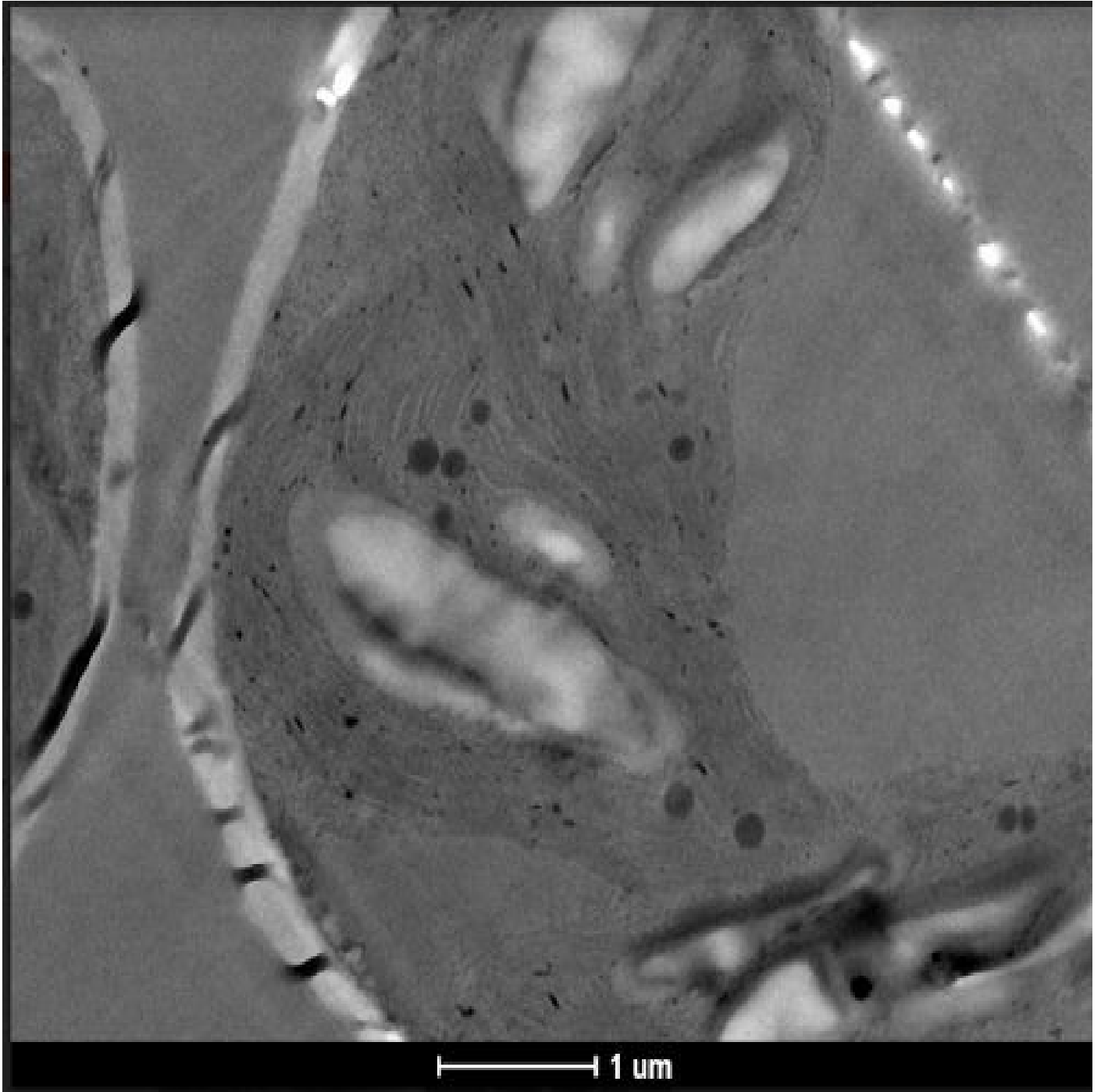
# IMAGE 3



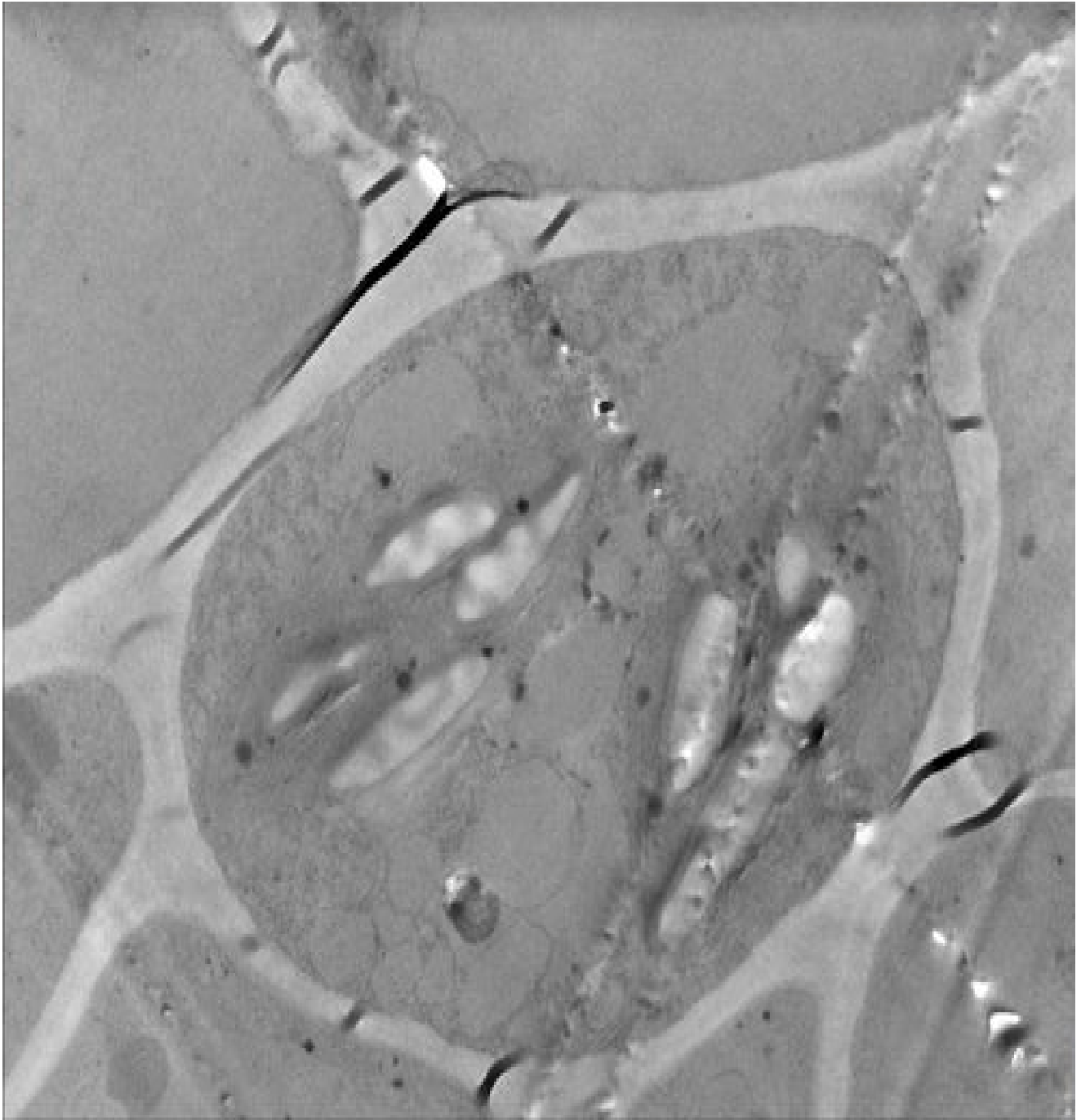
# IMAGE 4



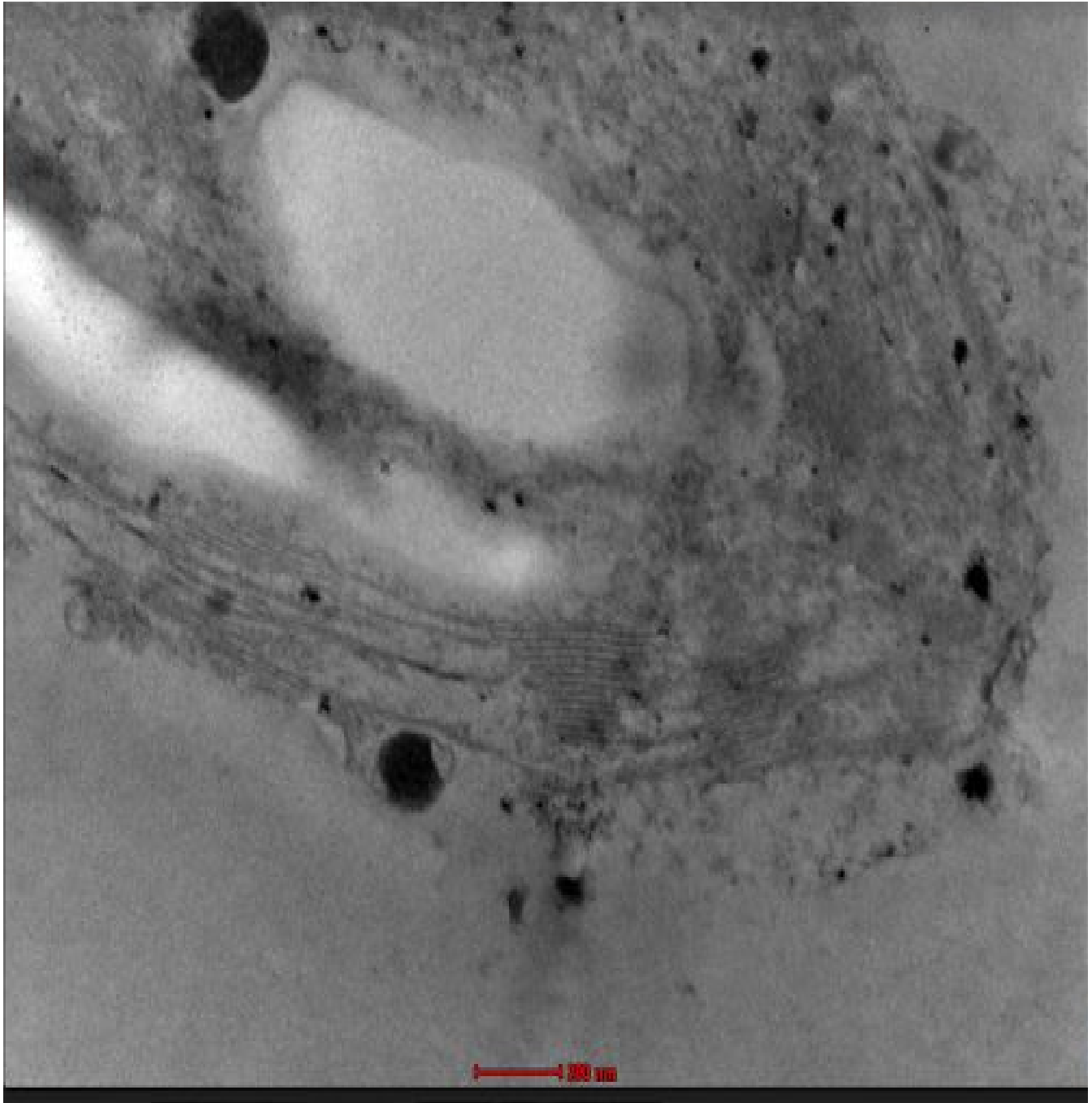
# IMAGE 5



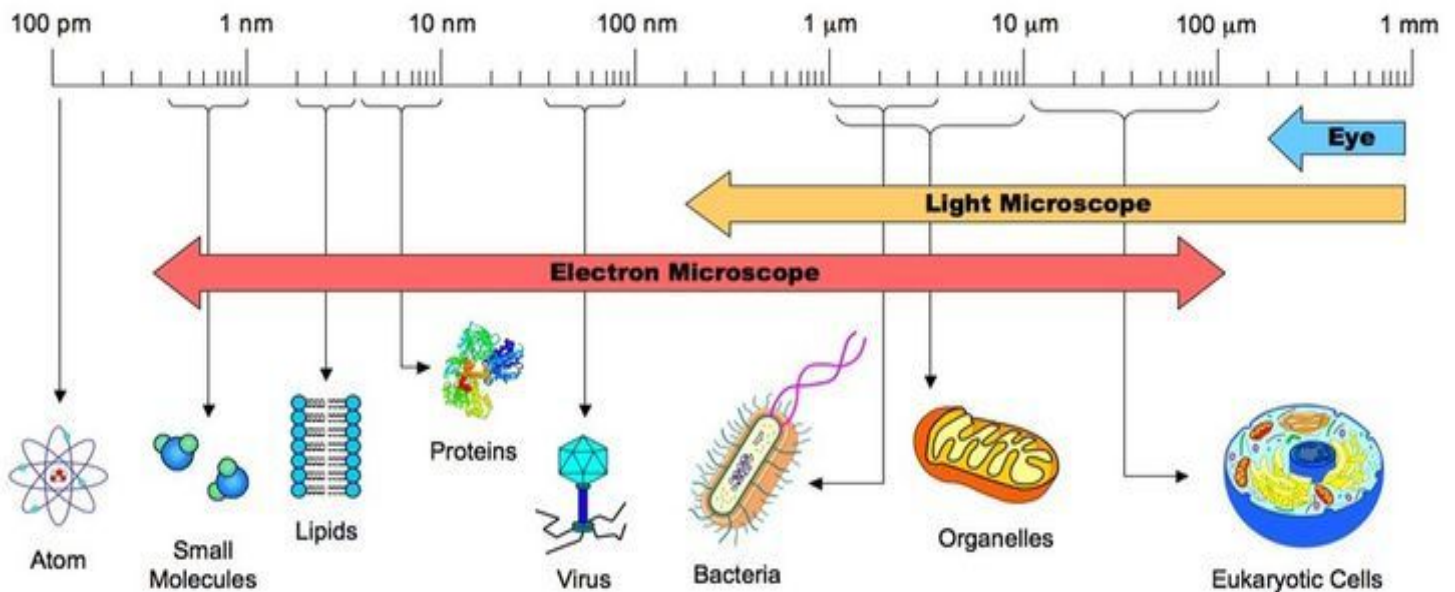
# IMAGE 6



# IMAGE 7



# USEFUL CELL MEASUREMENTS FOR IMAGES 5-7



<u>Metric Measurement of Size</u>	
1 Meter (m)	= 1m
10 Decimeters (dm)	= 1m
100 Centimeters (cm)	= 1m
1,000 Millimeters (mm)	= 1m
1,000,000 Micrometers (μm)	= 1m
1,000,000,000 Nanometers (nm)	= 1m

**20 nm= ribosome**

**25 nm= microtubule**

**30- 100 nm= Endoplasmic Reticulum (ER)**

**20-200 nm = Golgi body**

**200-500 = lysosome, peroxisome**

**3 micrometers (μm) = mitochondrion, chloroplast**

**3- 10 micrometers (μm) = nucleus**