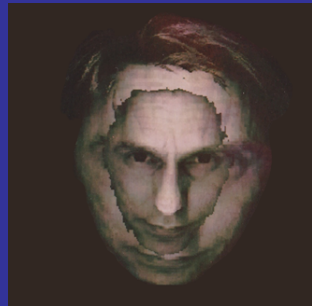
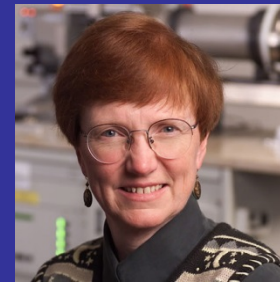


CCMR LAB SAFETY ROOM ORIENTATION BARD HALL SB56 & 58



Don Werder
djw426@cornell.edu
505-412-9135



Dr. Maura Weathers
msw11@cornell.edu
607-255-2295, 607-592-2091



ccmr

Cornell Center for Materials Research

Cornell University, Ithaca, NY

<http://www.ccmr.cornell.edu>



Policy:

The safety rules for CCMR are based on our best interpretation of requirements at the federal, local, campus, and Bard Hall levels. As a core facility with a broad user base, our goal is to enable all users to have the safest and most efficient possible research experience.

An alternative contact person for questions regarding the proper procedures, safety regulations or other concerns is Mick Thomas, mt57@cornell.edu , 607-592-8993. You may also find the following contacts may be able to assist you:

Matt Steel (mjs328@cornell.edu) Building Manager Bard Hall, 140 Upson Hall, 607-229-4115

John Sinnott, CCMR Group Safety Representative, jps39@cornell.edu

***Dan Woodie (Daniel.Woodie@cornell.edu) College of Engineering
Safety Officer***

Environmental Health and Safety, (5-8200, dehs-mailbox@cornell.edu)



Emergency Contact Info

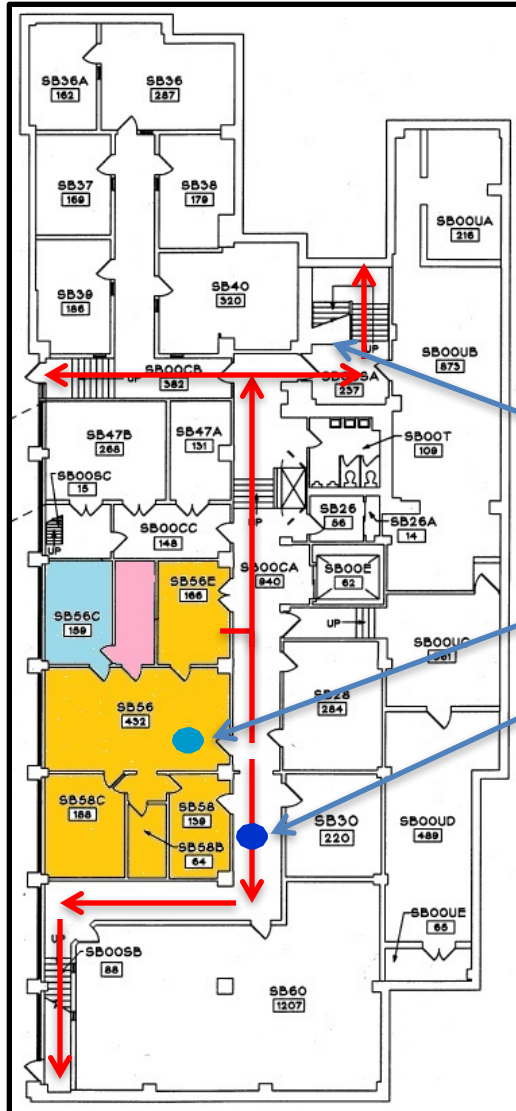
- **In case of emergency:**
 - Dial 911 from a mobile phone
 - Use an emergency phone in the hallways or stairwells
 - Dial 5-1111 from a campus phone

- **For non-emergency, urgent equipment issues, call the appropriate staff member using the number posted on the HASP signs on the doors.**

- **In the event you have any further questions regarding the proper procedures, safety regulations, or other concerns, please contact one of the Facility Staff.**



CCMR Training and Evacuation plan Bard Hall Sub-Basement



Training required for facility access

In the event of an emergency, evacuation should be along the route outlined by the red arrows. To report emergencies please use the emergency phones in stairwell or on the loading dock.

General trainings required to access the facilities are as follows

- Laboratory safety (EHS #2555-Laboratory)
- Global Harmonization (EHS #5711-Laboratory)
- Chemical waste disposal (EHS #2716-chemwaste)

- Emergency Phone
- Fire Extinguisher is indicated - ●
- Emergency Shower is indicated - ●

In addition to general training, rooms with specific hazards require extra training to access.

-Access to room SB56, SB56C & SB58C requires radiation training (#5033, Radiation Producing Equipment Safety)

Access will only be granted once proof of training has been provided to the facility!



Working In Bard Hall, SB56 & SB58 - Training

The following laboratory safety courses, offered on-line or in the classroom by Cornell University EH&S, are **required** to access the specified rooms. EH&S course numbers are listed.

See <http://www.ccmr.cornell.edu/facilities/safetyinfo/> for information on how to obtain training or verify your CULearn information

- | | |
|--|--|
| <input type="checkbox"/> EH&S training Laboratory Safety: | # 2555- Laboratory |
| <input type="checkbox"/> EH&S training in Chemical Waste Disposal: | # 2716- ChemWaste |
| <input type="checkbox"/> For access to SB56, SB56C & SB58C | # 5033- Radiation Producing Equipment* |

*The Mira SEM in SB56E does not require Radiation training



Working in Bard Hall SB56 - Safety

- There is a safety goggle wall dispenser near the room door entrance.
- Do not take food or drinks into the electron microscopy labs.
- There is no landline phone but there is an emergency phone on the stairwell as indicated on the floor plan map.
- The Red Rover and eduroam wireless networks are also available.



Use Of Chemicals In SB56 & SB58

- There are organic solvents, such as acetone, ethanol, isopropyl alcohol, in the sink room in squeeze bottles. The MSDS sheets for these solvents can be found on the desktop of the lab computer under the Coral login.
- Please return the solvent squeeze bottles back to the sink room when you are finished using them.
- Any organic solvent waste should be put in the solvent waste bottle, which is located in the lower cabinet in the sink room.



Acknowledging the Facility

Please remember to properly acknowledge use of the CCMR Facilities in your presentations, publications, and conference proceedings

Researchers who make use of these facilities must acknowledge the award number

NSF DMR-1120296

www.ccmr.cornell.edu/about/acknowledge.html

For more information, visit:
www.ccmr.cornell.edu/facilities

The background of this section features a large, stylized NSF logo on the left, which includes a globe and the letters "NSF". To the right of the logo, the text is arranged in a vertical stack. At the bottom, the letters "CCMR" are displayed in a large, light-colored, serif font.



CCMR Shared Facility Access Form (more information at <http://www.ccmr.cornell.edu/facilities/becoming-a-ccmr-facility-user/>)

Submit one form to *each* facility that you are requesting access to.

- 1) Print out this page. Illegible or incomplete forms may not be accepted.
- 2) Read the facility orientation completely. Required EH&S safety trainings for individual areas are listed below.

Trainings A,F, and W required for access to all facilities

Facility	Room	Additional Trainings	Facility	Room	Additional Trainings
Duffield Hall	150	CR	Clark Hall	F03 (Keck)	-
	231 (Prep)	C		All D21, D22	C*G*M*U*
Bard Hall	B47/A/B	C*L*U*		D15 (AFM)	-
	B55	G	ST Olin	B78	C
	B56	C	Snee Hall	1158	CR
	SB30	L		1102	R
	SB56 & 58	R*		1149 (μ probe)	R*

*Required for specific activities, see facility orientation

Safety trainings key

A	Laboratory safety (#2555-laboratory)
C	Cryogen handling (#3055-cryogensfty)
F	Fire safety (#5330-firesafety)
G	Compressed gas (#2335-compressed)
H	Hazard communication (#2343-hazardcomm)
L	Laser safety (#2397-lasersafety)
M	Magnetic fields (#5035-magnetic)
R	Radiation producing equipment (#5033 EHS-RPE)
U	Fume hood (#3355-FumeHood)
W	Chemical waste disposal (#2716-chemwaste)

3) Fill in user information below, sign and bring completed forms to the appropriate facility manager.

User Name _____ Cornell University ID card # _____

NetID/E-mail _____ Status _____ Department _____ Advisor _____

By signing below, I am attesting that I have read the facility orientation form and completed the necessary EH&S safety trainings.

User Signature _____ Date ____/____/____

Office use:

Door _____ e-mail list _____ entered by _____